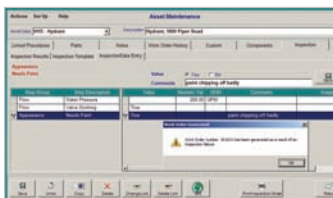




Asset Management Solution for Water and Wastewater Plants and Operations



eRPortal supports compliance with GASB 34 and the EPA's CMOM regulations.

Maintenance software designed expressly for the needs of water and wastewater operations and their dispersed assets.

eRPortal is the first to offer a fully integrated asset management solution specifically designed for water and wastewater utilities. Our solution automates the key areas of water-wastewater maintenance: work order management, preventative maintenance, and parts and tools management.

With its unique SCADA interface, the solution performs utilization-based maintenance on a utility's critical assets and machinery. eRPortal can trigger inspection and work orders for wastewater and sewer collection systems and water distribution networks. It integrates with popular geographic information systems (GIS), such as ESRI, to enable two-way data exchange with maintenance operations. Now GIS users can see the maintenance history of selected assets including inspection results and open work orders. When new work orders are triggered, the solution utilizes the GIS coordinates to prioritize inspection routes and maintenance schedules.



Mobile device functionality enables staff to download work orders while in the field.

GASB 34 and CMOM Support

eRPortal supports GASB 34 regulations with cradle-to-grave asset tracking capabilities. This functionality includes inspection and condition monitoring of aging assets and infrastructure. It also facilitates compliance with the EPA's CMOM regulations for environmental protection. The solution triggers work orders and inspections based on sewer line conditions and asset failure criticality. Now a utility can automate the assessment of current conditions and criticality to trigger future corrective actions and maintenance.

Mobile device functionality allows maintenance staff to download work orders to their PDAs while in the field.

eRPortal's asset management solution features:

- Web browser-enabled architecture
- Powerful parts and tools management functionality
- Multilingual application interface
- XML- and Web services-compliant for flexible interoperability
- Custom configurable screens adapted to individual user preferences for ease of use

About eRPortal

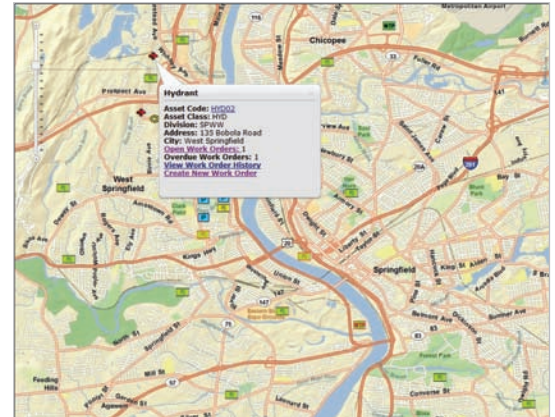
eRPortal is a developer and leading provider of asset management, maintenance management, and materials tracking software solutions that enable companies to better manage their operations and strategic assets. Its software applications have been developed with an architecture that delivers ease of use and flexibility to accommodate any work process requirements. In addition, the software is built on an architecture that provides every level of eRPortal user — from managers and analysts to stockroom and shop floor operators — with a unique interface and user profile based on their industry, organizational policies, daily tasks, and responsibilities.

Features and Benefits

Our asset management solution includes features designed specifically to enhance water and wastewater operations:

- User-defined inspection templates for each asset allow the user to set up unlimited inspection data fields and define parameters for data validation and inspection tolerances
- Inspections performed as part of PM or on demand
- Desktop or mobile-enabled inspection data entry
- Automatic work order generation based on inspection failures during inspection data entry
- Links from inspection data to asset utilization fields so data can be updated during inspections. PM work orders are triggered, when appropriate
- Inspection results recorded and inspection history viewed for each asset
- Procedure checklists defined for PMs, enabling step-by-step processing and verification of regular tasks and/or inspections
- Asset location viewed in GIS system with symbols defined by asset type
- eRPortal asset information displayed in GIS system, with links to eRPortal asset inquiry and work order history

Only eRPortal provides water and wastewater utilities with a purpose-built solution that streamlines maintenance operations, improves productivity, and enhances compliance with government regulations.



Maintenance activity and history view from GIS interface.



© 2009 eRPortal Software Group. All rights reserved. eRPortal is a trademark of the eRPortal Software Group.

For more information, contact
info@erportalsoftware.com
 or call (800) 326-1918.

eRPortal Software Group
 59 Interstate Drive
 West Springfield, MA 01089

(413) 739-7390
 (800) 326-1918
 (413) 739-0299 Facsimile

www.erportalsoftware.com